



Art Center College of Design
South Campus
Pasadena, CA

Sustainable Site

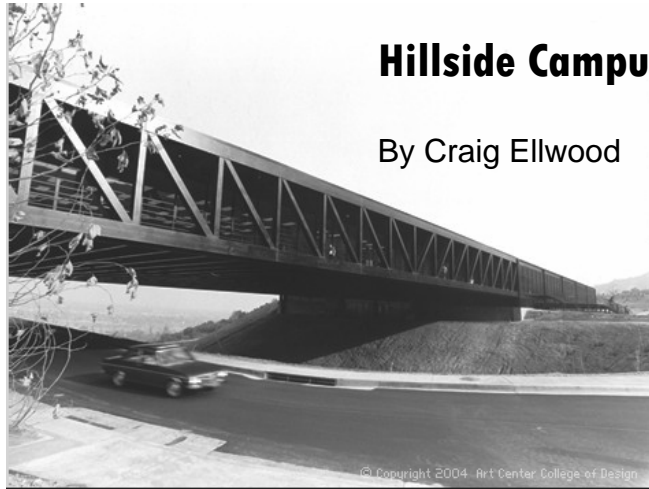
Water Efficiency

Energy & Atmosphere

Materials & Resources

Indoor Environmental Quality

Innovation & Design Process



Hillside Campus

By Craig Ellwood

Source: ACCD



Wind Tunnel



South Campus

Source: Metropolis

Sustainable Site

Water Efficiency

Energy & Atmosphere

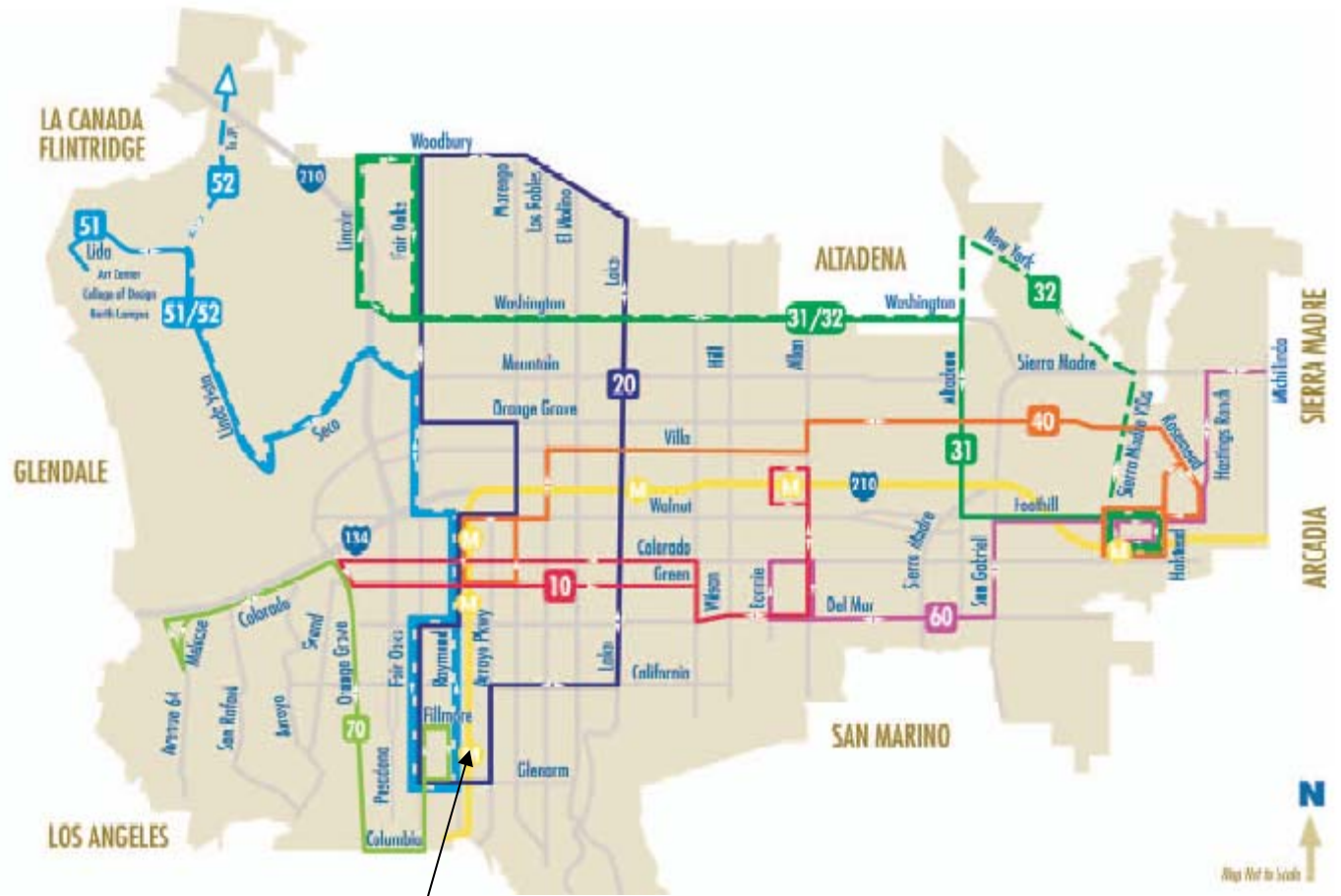
Materials & Resources

Indoor Environmental Quality

Innovation & Design Process



Source: Metropolis



Source: <http://www.ci.pasadena.ca.us>

South Campus

Sustainable Site

Water Efficiency

Energy & Atmosphere

Materials & Resources

Indoor Environmental Quality

Innovation & Design Process





Source: [Metropolis](#)



Source: [Architectural Review](#)



Source: www.dalygenik.com



Source: <http://www.intellect.com>

Sustainable Site

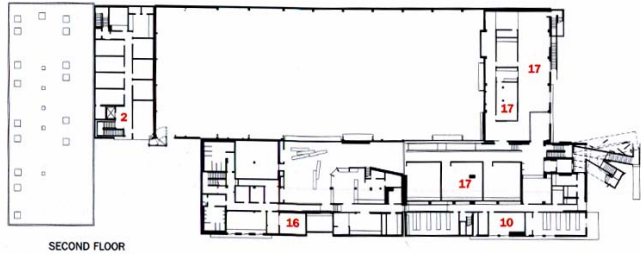
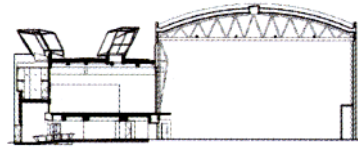
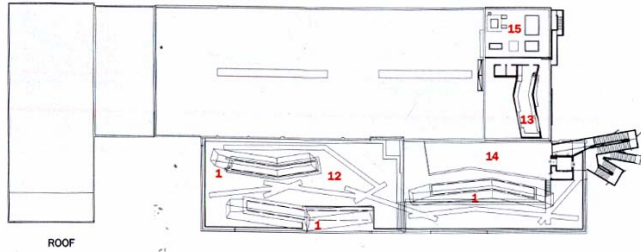
Water Efficiency

Energy & Atmosphere

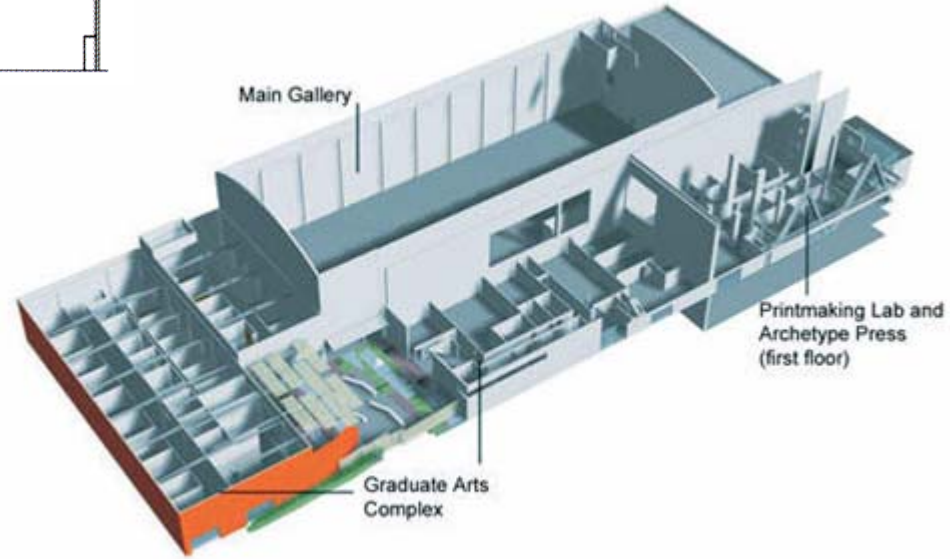
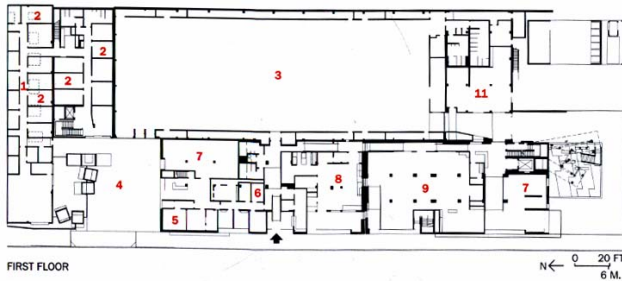
Materials & Resources

Indoor Environmental Quality

Innovation & Design Process



- 1. Skylight
- 2. M.F.A. studios
- 3. Public events space
- 4. Fine arts courtyard
- 5. Video gallery
- 6. Video editing
- 7. Gallery
- 8. Printmaking lab
- 9. Archetype press
- 10. Computer lab
- 11. Design lab
- 12. Roof garden
- 13. Future café
- 14. Plaza
- 15. Mechanical
- 16. Conference
- 17. Administration



Sustainable Site

Water Efficiency

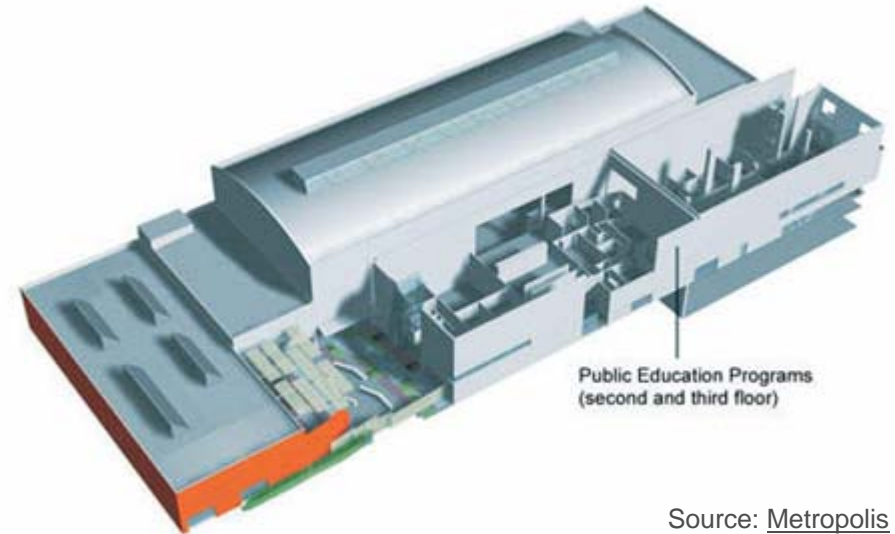
Energy & Atmosphere

Materials & Resources

Indoor Environmental Quality

Innovation & Design Process

Source: Architectural Record



Source: Metropolis



Source: [Metropolis](#)



Source: [Metropolis](#)

Sustainable Site

Water Efficiency

Energy & Atmosphere

Materials & Resources

Indoor Environmental Quality

Innovation & Design Process



Source: www.buonriposo.it





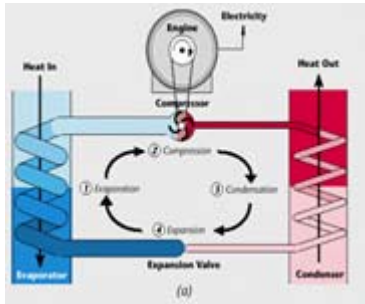
Source: www.nancypower.com



Source: www.landliving.com



Source: www.landliving.com



Source: www.daviddarling.info

Sustainable Site

Water Efficiency

Energy & Atmosphere

Materials & Resources

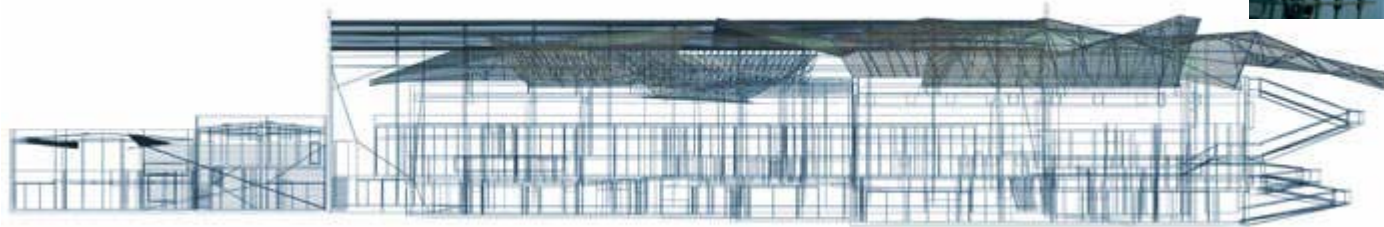
Indoor Environmental Quality

Innovation & Design Process



Source: www.landliving.com

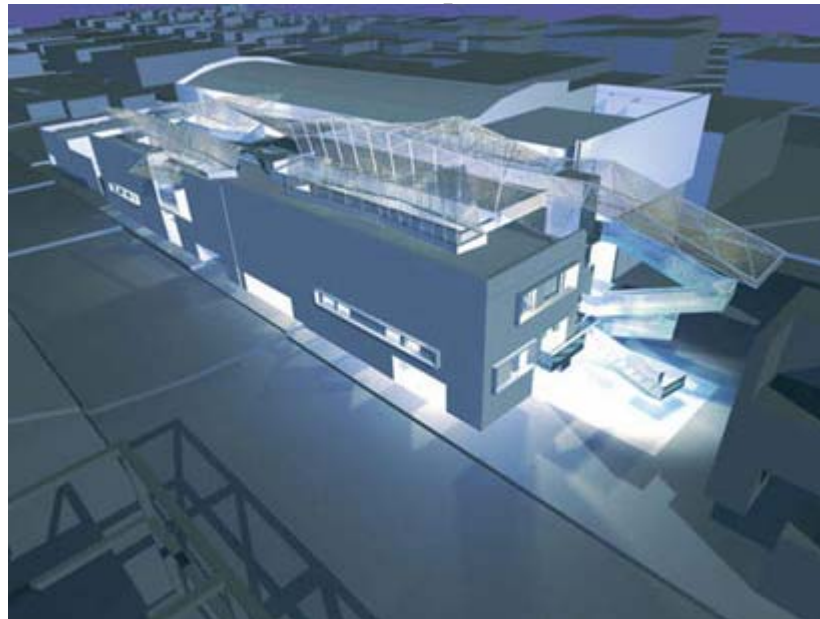




Source: [Metropolis](#)



Source: [Metropolis](#)



Source: [Metropolis](#)

Sustainable Site

Water Efficiency

Energy & Atmosphere

Materials & Resources

Indoor Environmental Quality

Innovation & Design Process



Source: www.foiltec.com



Source: [Architectural Review](#)

Sustainable Site

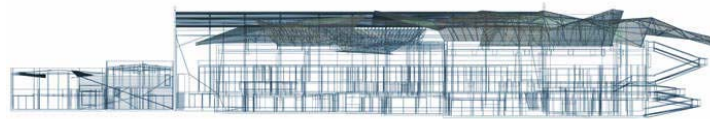
Water Efficiency

Energy & Atmosphere

Materials & Resources

Indoor Environmental Quality

Innovation & Design Process



Source: [Metropolis](#)

-Pneumatic Skylights

-Dual Foiltec Membrane



Source: [Metropolis](#)



Source: www.landliving.com



Source: [Architectural Review](#)

Sustainable Site

Water Efficiency

Energy & Atmosphere

Materials & Resources

Indoor Environmental Quality

Innovation & Design Process

-Exterior Shell Preserved

-Over 99% construction waste diverted from landfills



Source: [Architectural Review](#)



Source: www.landliving.com

Sustainable Site

Water Efficiency

Energy & Atmosphere

Materials & Resources

Indoor Environmental Quality

Innovation & Design Process





Source: [Architectural Record](#)



Source: [Architectural Record](#)



Source: [Architectural Review](#)



Source: [Architectural Review](#)

Sustainable Site

Water Efficiency

Energy & Atmosphere

Materials & Resources

Indoor Environmental Quality

Innovation & Design Process



Source: www.foiltec.com



Source: www.chronicle.com



**Art Center College of Design
South Campus
Pasadena, CA**

Sustainable Site

Water Efficiency

Energy & Atmosphere

Materials & Resources

Indoor Environmental Quality

Innovation & Design Process