

An aerial photograph of a rural landscape. The foreground shows rolling green and yellow hills with a winding road and a small stream. In the middle ground, there are more hills and a small town or village. The background features a range of mountains under a clear sky.

Preserving America's Civil War Battlefields: Antietam and Manassas

Nalat Phanit

Why Preserve Battlefields?

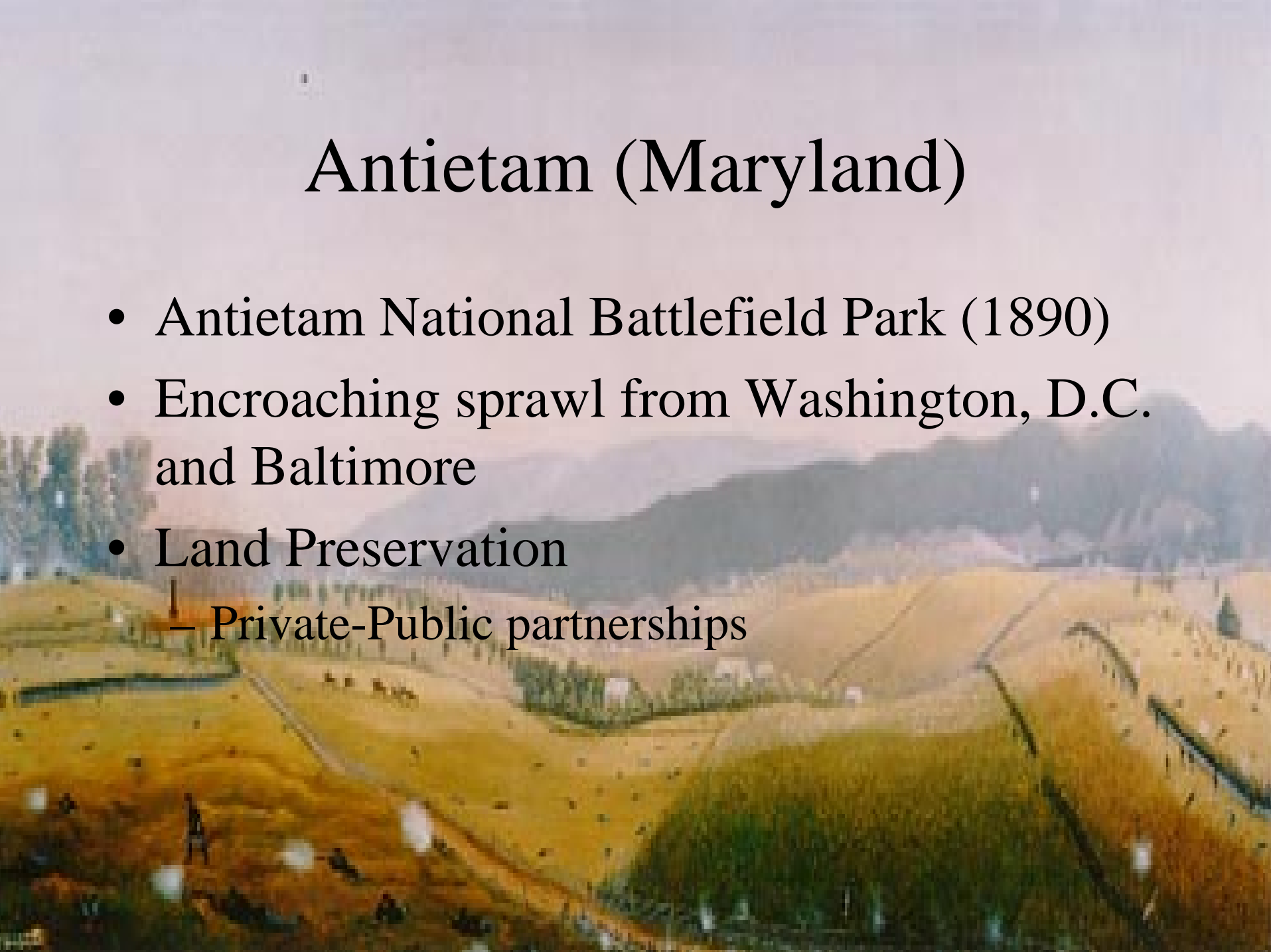
Battlefields can be use for...

- Open space
- Farmlands
- Educational resources
- Environmental protection
- Economic well-being



Antietam (Maryland)

- Antietam National Battlefield Park (1890)
- Encroaching sprawl from Washington, D.C. and Baltimore
- Land Preservation
 - Private-Public partnerships

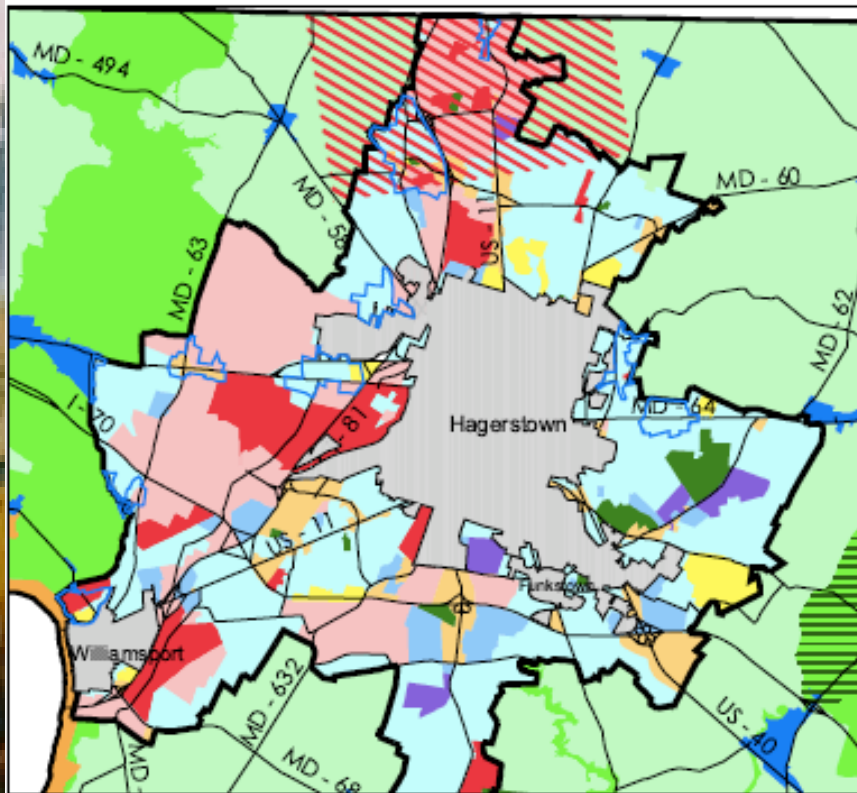
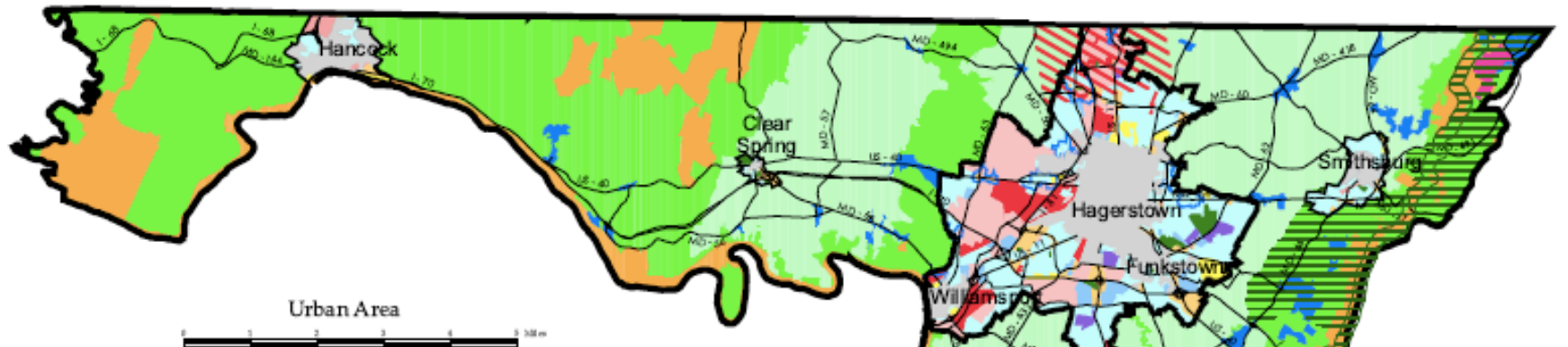


Antietam (Maryland)

- Washington County's Comprehensive Plan (2002)
 - Land Preservation is a goal



Land Use Plan



Key

- Growth Boundary
- Rural Villages (Urban)
- Quority
- Airport
- Artillery
- Special Planning Area
- Urban**
 - Industrial
 - Industrial / Flex
 - Commercial
 - Mixed Use Developments
 - High Density Residential
 - Low Density Residential
 - Community Facilities
 - Urban Open Spaces
- Rural**
 - Special Economic Development Area
 - Rural Villages
 - Preservation
 - Environmental Conservation
 - Agriculture

Note: This map is prepared for the sole purpose of illustrating the Comprehensive Plan. It should not be used for other purposes. Information shown on this map was compiled from various original sources as listed and is subject to change as sources or data change.

Q:\public\complan\landuse.apr

Data Sources:
 U. S. Census Bureau
 Natural Resources Conservation Service
 MD Department of Planning
 MD State Highway Administration
 Washington County Planning Dept

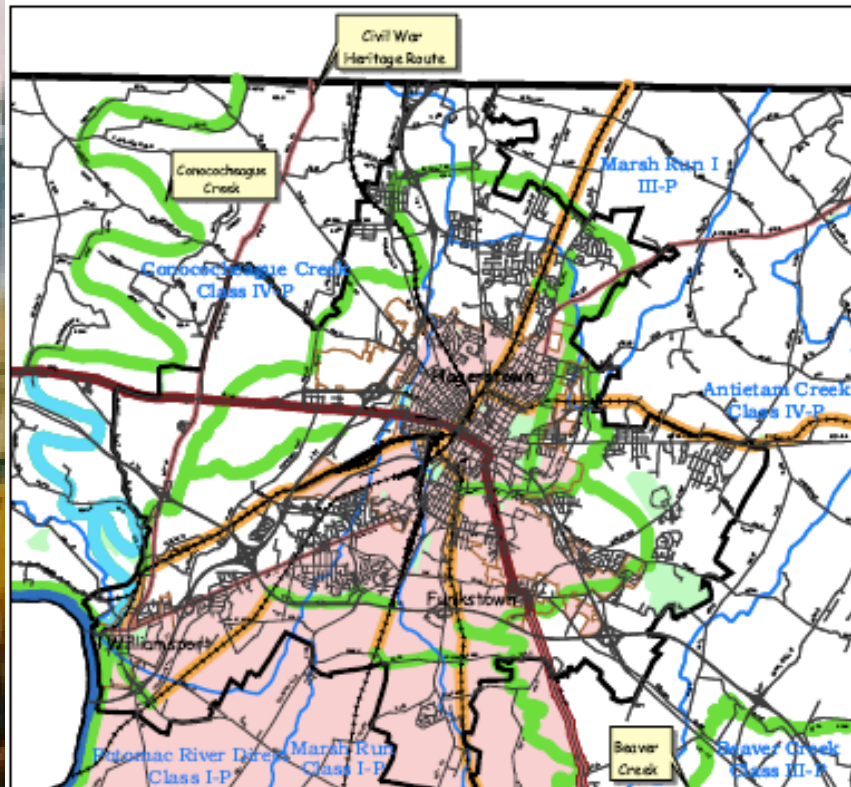
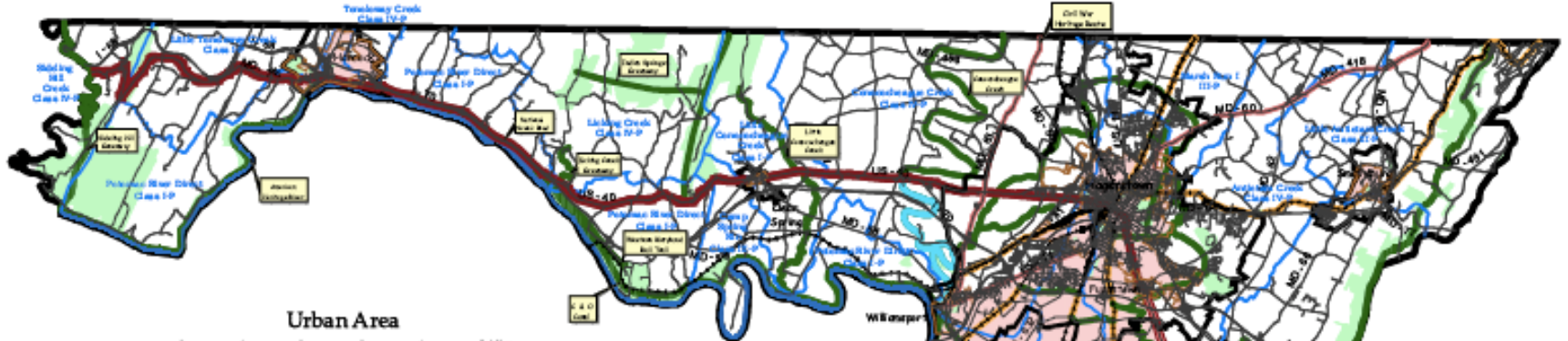


Map 51
 Comprehensive Plan
 for
 Washington County,
 Maryland
 2002

Prepared by the
 Washington County
 Planning Department
 Geographic Information System

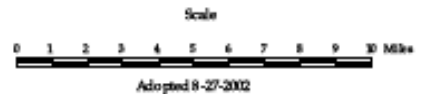
Adopted 8-27-2002

Special Program Areas



Note: This map is prepared for the sole purpose of illustrating the Comprehensive Plan. It should not be used for other purposes. Information shown on this map was compiled from various original sources as listed and is subject to change as soon as data changes.

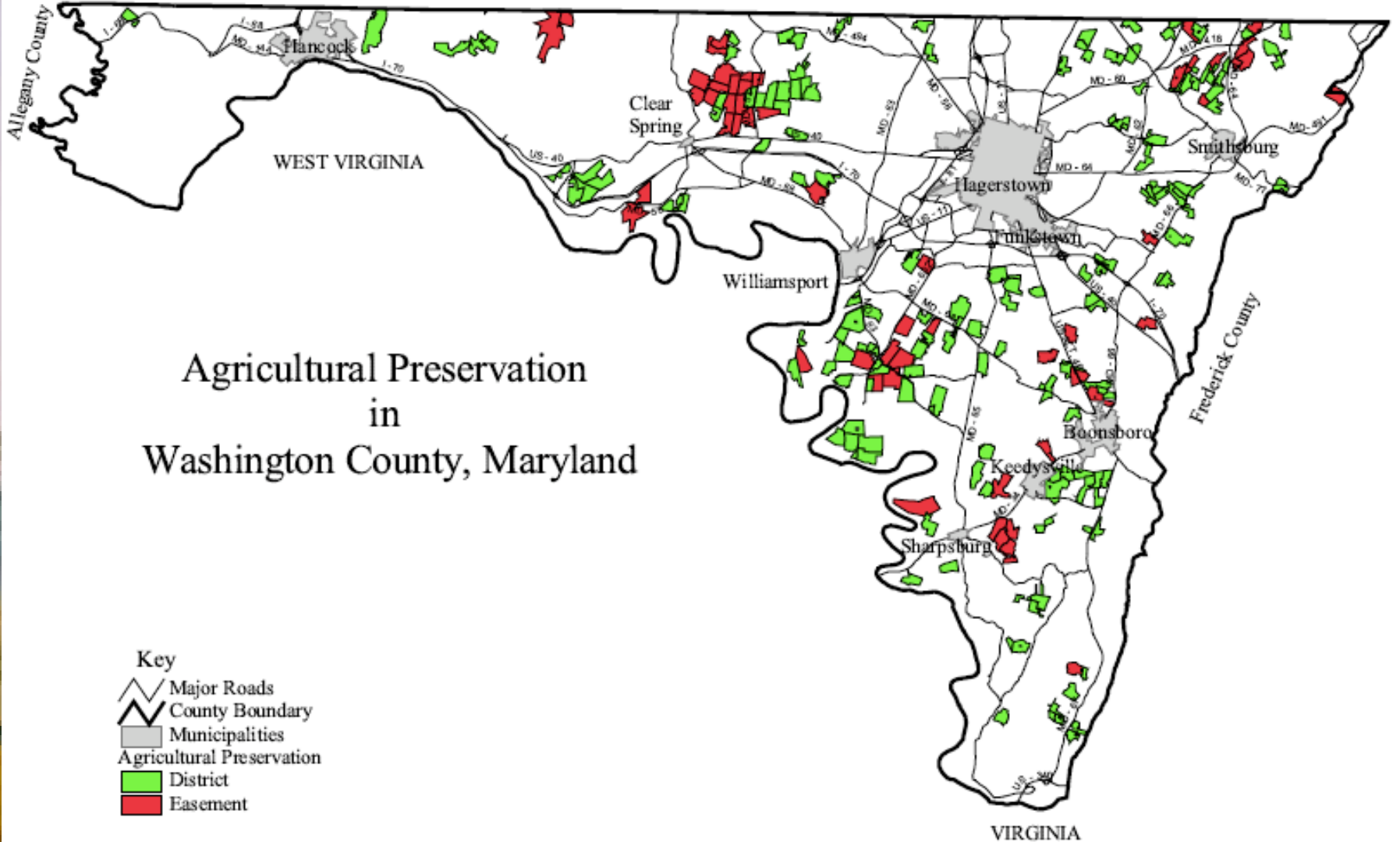
Data Sources:
 U.S. Census Bureau
 MD Department of Planning
 MD State Highway Administration
 Washington County Planning Dept



- Key**
- Roads
 - Railroad Lines
 - Municipal Boundaries
 - 2002 Growth Boundaries
 - Civil War Heritage Routes
 - National Scenic Road
 - American Heritage River
 - Watershed Boundaries
 - Greenways
 - Water Trails
 - Potential Rail Trails
 - County Boundary
 - Parks
 - Civil War Heritage Areas

Map 52
 Comprehensive Plan
 for
 Washington County,
 Maryland
 2002
 Prepared by the
 Washington County
 Planning Department
 Geographic Information System

PENNSYLVANIA



Agricultural Preservation in Washington County, Maryland

- Key**
- Major Roads
 - County Boundary
 - Municipalities
 - Agricultural Preservation**
 - District
 - Easement

This map shows locations of privately owned farms. These lands are being preserved for agricultural use and are not open to the public.



Prepared by the Washington County
Planning Department GIS, 4-28-2005
t:\policy\agri\agpres.apr



Land Preservation and Recreation Plan
Washington County Planning Commission



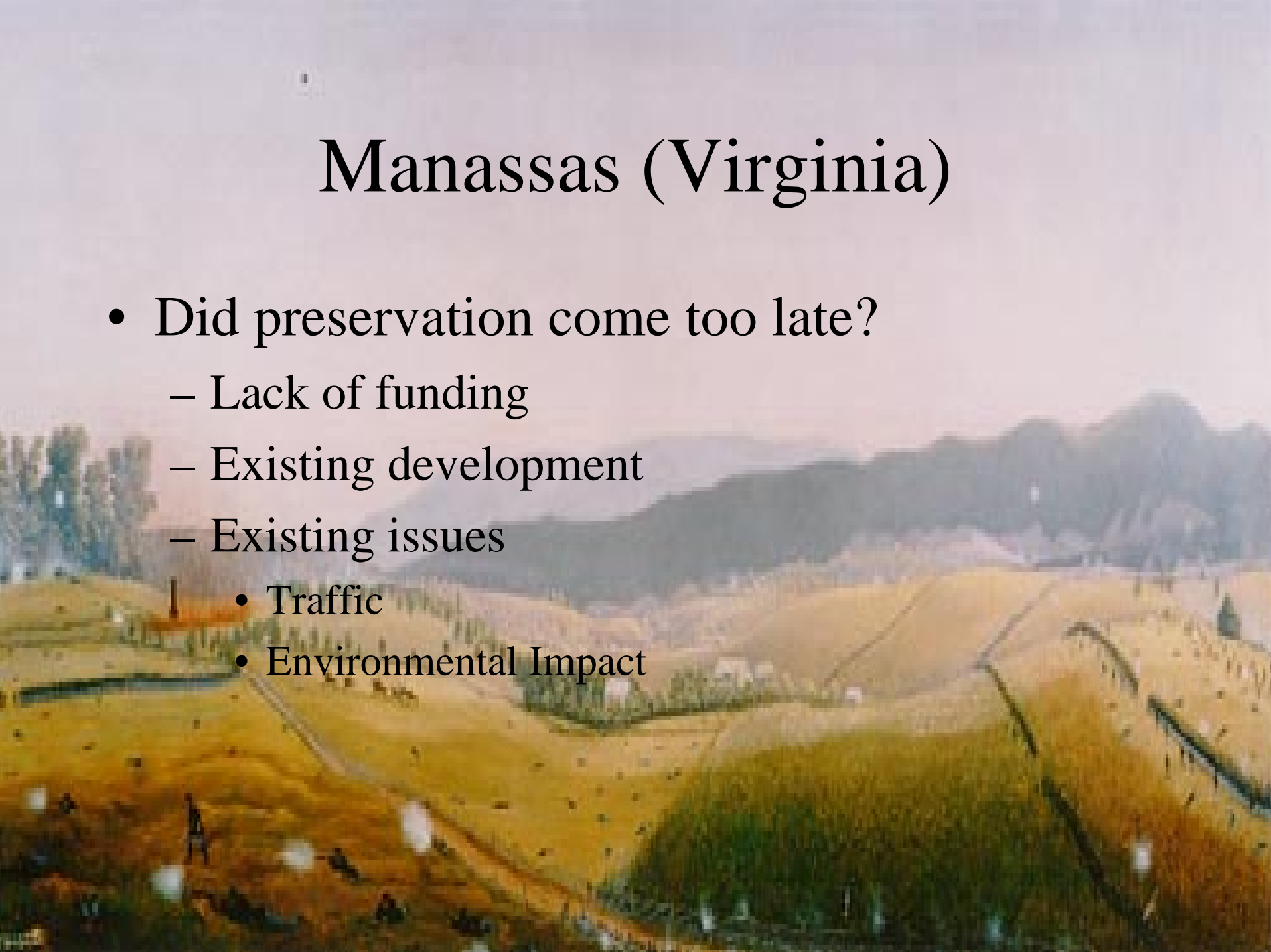
Manassas (Virginia)

- Manassas National Battlefield Park (1940)
- Sprawl from Washington, D.C.
- “Third Battle of Manassas” (1988)
- “Fourth Battle of Manassas” (1993)



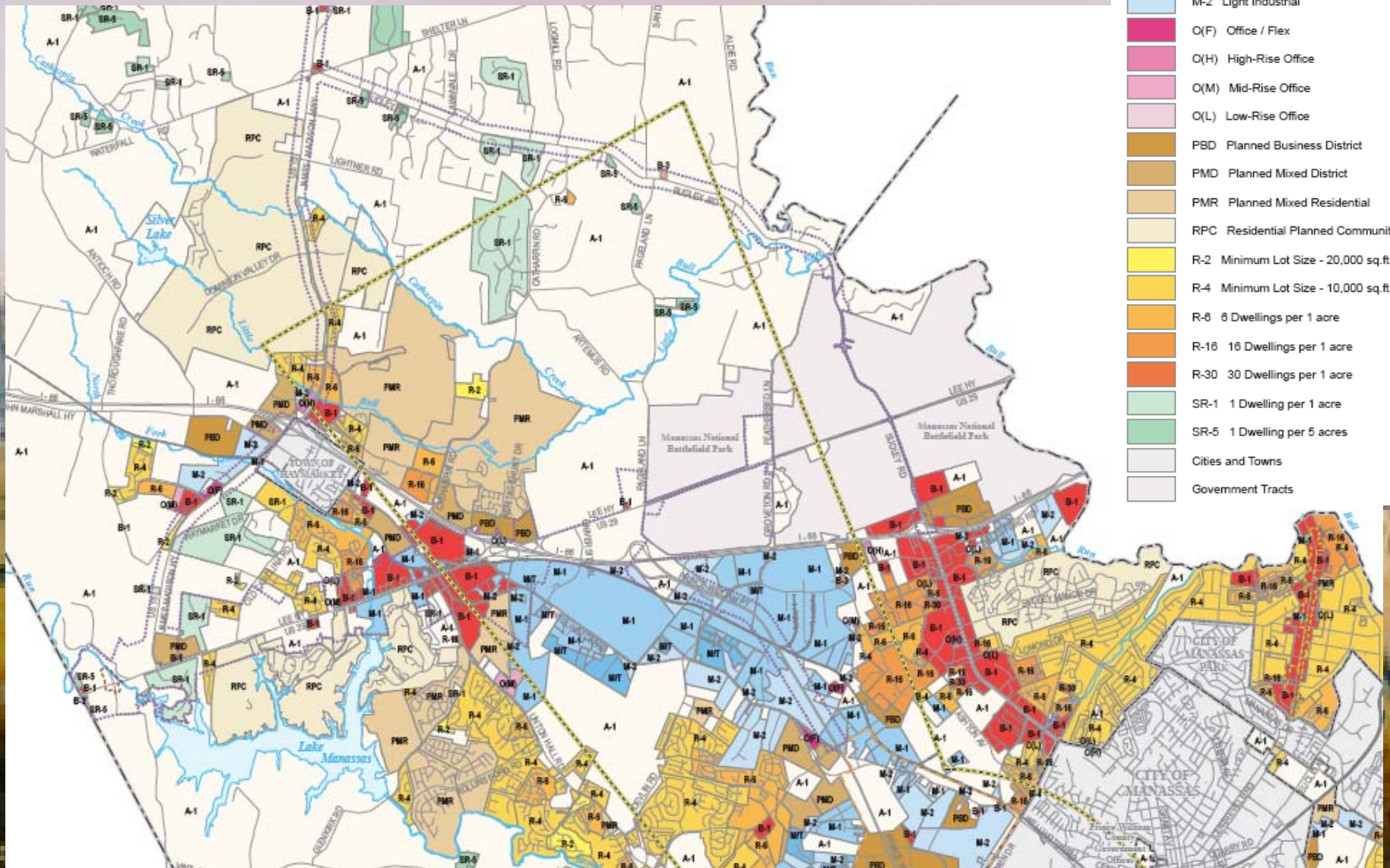
Manassas (Virginia)

- Did preservation come too late?
 - Lack of funding
 - Existing development
 - Existing issues
 - Traffic
 - Environmental Impact

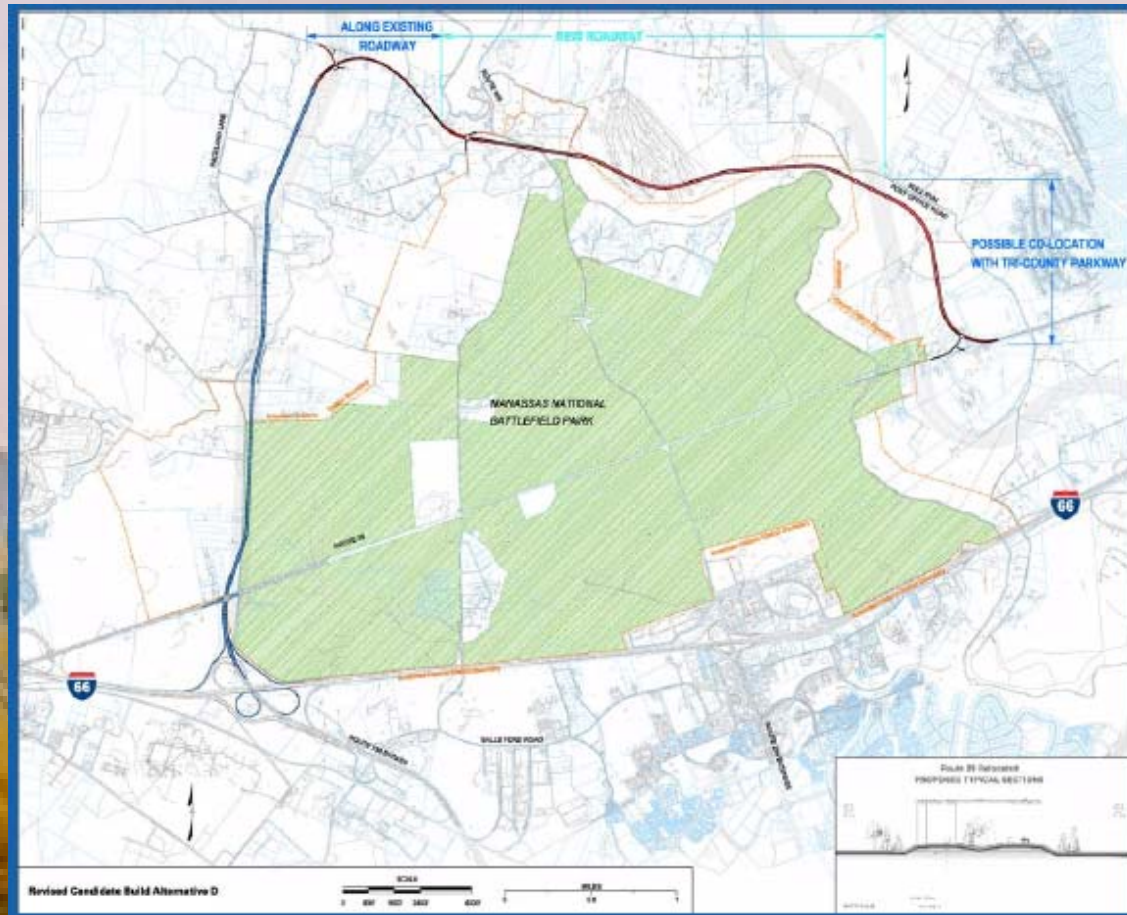


ZONING CLASSIFICATIONS

- A-1 Agricultural
- B-1 General Business
- B-2 Neighborhood Business
- B-3 Convenience Business
- MT Industrial / Transportation
- M-1 Heavy Industrial
- M-2 Light Industrial
- O(F) Office / Flex
- O(H) High-Rise Office
- O(M) Mid-Rise Office
- O(L) Low-Rise Office
- PBD Planned Business District
- PMD Planned Mixed District
- PMR Planned Mixed Residential
- RPC Residential Planned Community
- R-2 Minimum Lot Size - 20,000 sq.ft.
- R-4 Minimum Lot Size - 10,000 sq.ft.
- R-8 8 Dwellings per 1 acre
- R-16 16 Dwellings per 1 acre
- R-30 30 Dwellings per 1 acre
- SR-1 1 Dwelling per 1 acre
- SR-5 1 Dwelling per 5 acres
- Cities and Towns
- Government Tracts



Future Bypass...Maybe



Conclusion

- Antietam Battlefield (Sustainable)
 - Benefited from early recognition
 - Successful Public/Private Partnerships
 - Strong land preservation culture
- Manassas Battlefield (Was Sustainable)
 - Struggling to compete with increasing sprawl

References

- Agricultural Preservation in Washington County, Maryland. Map. Land Preservation, Parks and Recreation Plan: Washington County, MD, 2005 http://www.washco-md.net/county_attorney/legal.shtm.
- Benfield, Kaid, Jutka Terris, and Nancy Vorsanger. Solving Sprawl: Models of Smart Growth in Communities Across America. New York: The Natural Resources Defense Council, 2001.
- Comprehensive Plan for the County 2002: Washington County, Maryland. 27 August 2002. Washington County Planning Commission. 18 Sept. 2008 http://www.washco-md.net/county_attorney/legal.shtm.
- Hodge, Robert Lee. "The Struggle Continues to Protect the Plains of Manassas from Development Pressure Caused by Sprawl." America's Civil War 14.1 (March 2001): 74.
- Hope, James. A Fateful Turn. Painting. <http://www.nps.gov/archive/anti/hope02.htm>.
- Kennedy, Frances, and Douglas R. Porter. Dollar\$ and Sense of Battlefield Preservation. Washington, D.C.: The Preservation Press, 1994.
- Land Use Plan. Map. Land Preservation, Parks and Recreation Plan: Washington County, MD, 2005. http://www.washco-md.net/county_attorney/legal.shtm.
- Manassas National Battlefield Park Bypass Study. 6 July 2005. Prince William County Transportation Division. 19 Sept. 2008 www.pwcgov.org/docLibrary/PDF/007211.pdf.

References (cont.)

- Manassas Park Map. Map. National Park Service, 2008.
<http://www.nps.gov/mana/planyourvisit/maps.htm>
- Moe, Richard, and Carter Wilkie. Changing Places: Rebuilding Community in the Age of Sprawl. New York: Henry Holt and Company, Inc., 1997.
- Prince William County Zoning Classification Map. Map. Prince William County Planning Office, 2008.
<http://www.pwcgov.org/default.aspx?topic=040073001420000939>.
- Rambur, Richard. "Compromise at Antietam." National Parks 64.1 (Jan/Feb 1990): 16-17
- Special Programs Areas. Map. Land Preservation, Parks and Recreation Plan: Washington County, MD, 2005.
http://www.washco-md.net/county_attorney/legal.shtm.
- Stone House. Picture. National Park Service. 2008.
<http://www.nps.gov/parkoftheweek/mana.htm>.
- Zenzen, Joan M. Battling for Manassas: The Fifty-Year Preservation Struggle at Manassas National Battlefield Park. University Park: The Pennsylvania State University Press, 1998.